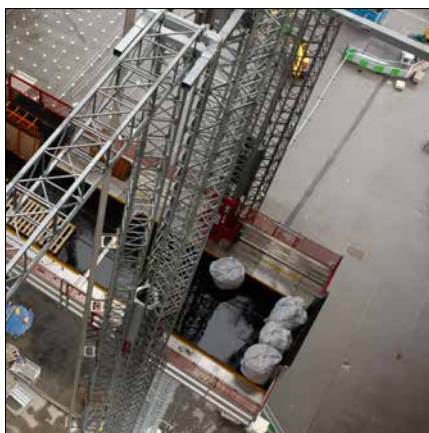
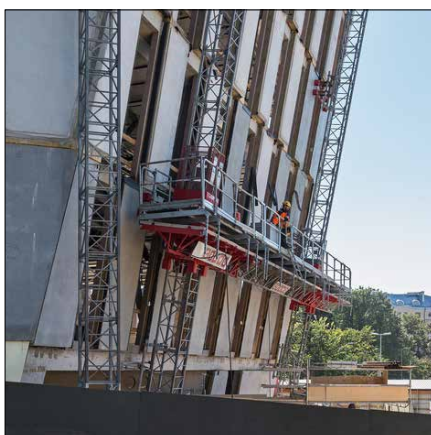
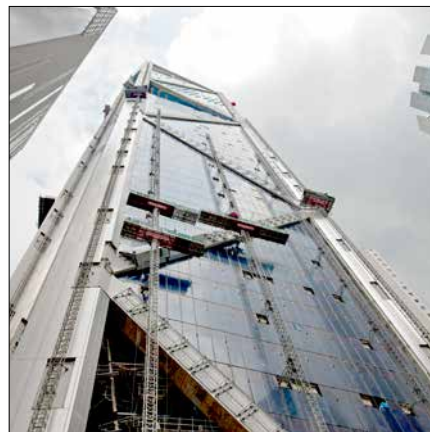
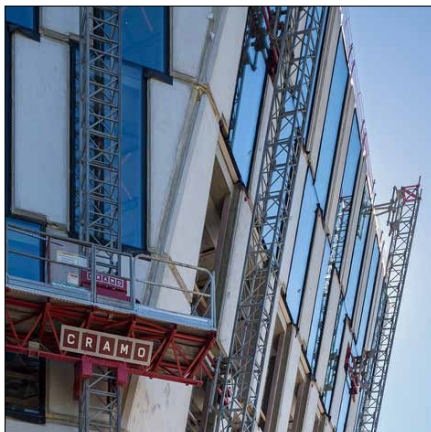




# Mast Climbing Work Platforms **Product Family**

Mast climbing work platforms (MCWPs) are increasingly being used as temporary work places, giving variable height access to specific areas above ground level. In many cases MCWPs are more convenient to use than other forms of access equipment such as ladders, fixed scaffolding, staging or swingstage.



# **SCANCLIMBER®**

# Mast Climbing Work Platforms

## Properties

**MAST CLIMBERS ARE IDEAL** for façade work when lifting capacity, work ergonomics, and full surface accessibility are required on a new construction or renovation site. Scanclimber mast climbers offer lifting capacity from 2640 lbs up to 22490 lbs, ideal work ergonomics with full access to the surface with lifting speeds up to 25 ft per minute.

**RACK AND PINION DRIVEN** Scanclimber mast climbers are medium to heavy weight lifting machines and working platforms – all in one package. They can handle extreme heights, climbing fast and reliably up to 980 ft. They are well-suited for façade work that requires a capacity up to 22490 lbs, whether for new construction or restoration.

## Uses

**SCANCLIMBER MAST CLIMBERS** combine low ownership costs with versatility, reliability and safety. They are the ideal access solution for a wide variety of trades: glazing, EIFS, painting, roofing, caulking, restoration, inspection, cleaning, maintenance, stucco and many others.

Compact and highly adaptable Scanclimber mast climbers offer platform extensions to achieve a number of configurations that accommodate diverse facades.

## Single Mast and Twin Mast Versions



**MAST CLIMBERS ARE AVAILABLE** in two versions to meet your specific needs and your budget requirements.

**THE SINGLE MAST** versions support from 2640 lbs to 13230 lbs payloads with platform lengths between 13'4" and 67'11".

**THE TWIN MAST** versions support payloads from 2200 lbs to 22490 lbs with platform lengths of up to 159'5".

**IF NEEDED**, you can make the twin mast machine from two separate (similar) machines with minor add-ons. And naturally, a twin machine can always be separated as two single mast versions.

## Technical Data

	SC4000		SC5000	
				
	Single mast	Twin mast	Single mast	Twin mast
Maximum platform length / loading capacity	13'7" / 4400 lbs 24'1" / 3750 lbs 34'7" / 3080 lbs 41'2" / 2640 lbs	39' / 9240 lbs 49'6" / 8360 lbs 65'3" / 7150 lbs 75'9" / 6075 lbs	13'4" / 6000 lbs 23'10" / 5000 lbs 34'4" / 4100 lbs 44'11" / 3300 lbs	41'4" / 11000 lbs 67'7" / 8800 lbs 93'10" / 6600 lbs 114'10" / 4800 lbs
		81' / 5880 lbs 91'6" / 5400 lbs	55'5" / 2200 lbs	133'2" / 3300 lbs
Maximum freestanding height				
• with extended outriggers on both sides	50'	50'	60'–65'	65'
• with extended outriggers on one side	50'	50'	42'–60'	42'–65'
Maximum height with top anchor	82'	82'	82'	82'
Maximum height with mast anchored	330' (higher mast by request)	330' (higher mast by request)	330' (higher mast by request)	330' (higher mast by request)
Distance between anchors	60'	60'	60'	60'
Lifting speed	20' / min	20' / min	25' / min	25' / min
Mast section, hot-dip galvanized	4'1" / 180 lbs	4'1" / 180 lbs	4'1" / 180 lbs	4'1" / 180 lbs
Electric system - lifting motors	2x208 V/60 Hz/ 2.4 kW, 3 Phase/30 A	4x208 V/60 Hz/ 2.4 kW, 3 Phase/30 A	2x208 V/60 Hz/ 3 kW, 3 Phase/30 A	4x208 V/60 Hz/ 3 kW, 3 Phase/30 A
Safety devices				
• overspeed safety brake	◆	◆	◆	◆
• emergency stop and limit switches	◆	◆	◆	◆
• electromagnetic brake	◆	◆	◆	◆
• phase sequency relay	◆	◆	◆	◆
• residual current device	◆	◆	◆	◆

## Work Space and Speed

**4'3"–5'3" WIDE PLATFORMS** provide enough space for workers to perform their job in comfort and still requiring a very small footprint (space) on site. The machine is operated with speeds ranging from 20'–25'/min.

## Fast to Erect

**SCANCLIMBER MAST CLIMBERS** are faster to set up than most mast climbers. The reason is a very stable mast. It allows longer anchor/tie spacing – often almost double compared to respective rival products. All this contributes to greater labour efficiency and reduced set-up time, and of course to a safer work environment.

## Long Lifetime – More Profit

**SCANCLIMBER HAS BUILT IN LONG-LASTING QUALITY** to mast climbing work platforms. It is in the structure, raw materials, automated manufacturing processes and finishing. For example the masts sections are precision welded from high quality steel by robots and when ready, they are finished with hot-dip galvanization.

## Interchangeable Components

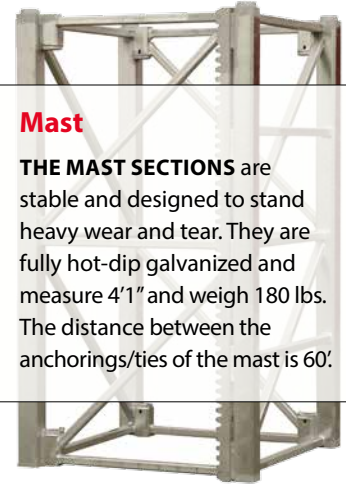
**THE MODULAR DESIGN OF SCANCLIMBER** mast climbing work platforms makes most of the components interchangeable between different Scanclimber models. The platform is easy and quick to erect and assemble manually and to transfer to a new location when necessary.

**ALL SCANCLIMBER** mast climbing work platforms are equipped with reliable safety systems:

- Safety brake, to prevent platform from falling in all circumstances
- Emergency lowering system
- Automatic movement limit switch at top and bottom
- Automatic levelling system, twin mast versions.

### Mast

**THE MAST SECTIONS** are stable and designed to stand heavy wear and tear. They are fully hot-dip galvanized and measure 4'1" and weigh 180 lbs. The distance between the anchorings/ties of the mast is 60'.



### SC6000



### SC8000

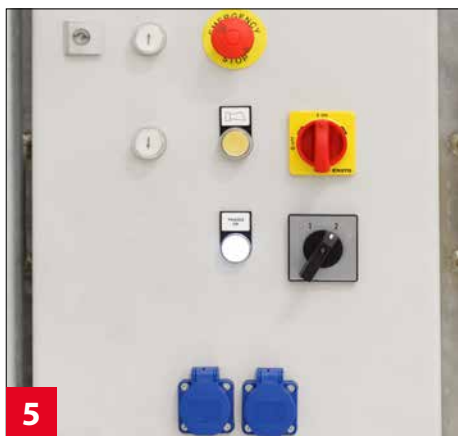
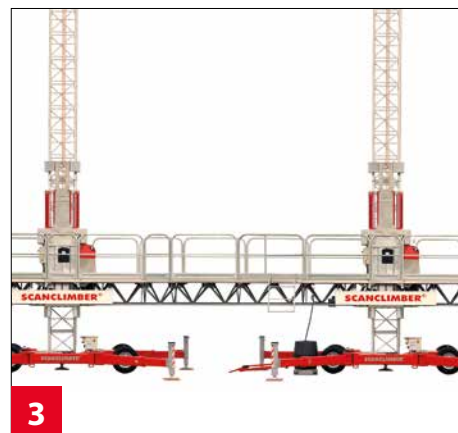


### SC10000



SC6000		SC8000		SC10000	
Single mast	Twin mast	Single mast	Twin mast	Single mast	Twin mast
13'4" / 7200 lbs	44' / 12300 lbs	13'4" / 9910 lbs	51'10" / 17620 lbs	13'4" / 13230 lbs	51'10" / 22490 lbs
23'10" / 6380 lbs	78'1" / 10450 lbs	23'10" / 9030 lbs	67'7" / 17180 lbs	23'10" / 12340 lbs	62'4" / 22930 lbs
34'4" / 5940 lbs	88'7" / 9030 lbs	34'4" / 8140 lbs	83'4" / 15850 lbs	34'4" / 11680 lbs	80'8" / 19400 lbs
44'11" / 4620 lbs	120'1" / 4840 lbs	44'11" / 7150 lbs	99'1" / 12330 lbs	44'11" / 8820 lbs	99'1" / 14550 lbs
55'5" / 3080 lbs	146'4" / 2640 lbs	55'5" / 6160 lbs	114'10" / 10130 lbs	55'5" / 6830 lbs	114'10" / 12340 lbs
			133'2" / 7920 lbs	67'11" / 3970 lbs	133'2" / 9480 lbs
			151'7" / 2200 lbs		159'5" / 3300 lbs
30'–62'	30'–59'	30'–62'	30'–59'	30'–62'	30'–59'
30'–50'	30'–50'	30'–50'	30'–50'	30'–50'	30'–50'
82'	82'	82'	82'	82'	82'
330' (higher mast by request)	330' (higher mast by request)	490' (higher mast by request)	490' (higher mast by request)	490' (higher mast by request)	490' (higher mast by request)
60'	60'	60'	60'	60'	60'
20' / min	20' / min	20' / min	20' / min	23' / min	23' / min
4'1" / 180 lbs	4'1" / 180 lbs	4'1" / 180 lbs	4'1" / 180 lbs	4'1" / 180 lbs	4'1" / 180 lbs
2x208 V/60 Hz/ 3 kW, 3 Phase/30 A	4x208 V/60 Hz/ 3 kW, 3 Phase/30 A	2x208 V/60 Hz/ 3 kW, 3 Phase/30 A	4x208 V/60 Hz/ 3 kW, 3 phase/30 A		
♦	♦	♦	♦	♦	♦
♦	♦	♦	♦	♦	♦
♦	♦	♦	♦	♦	♦
♦	♦	♦	♦	♦	♦





## Details, examples

### Wheel and Minichassis

**1** **SCANCLIMBER PLATFORMS** are available with a wheel or mini chassis. A wheel chassis can be moved around a work site with its own electric motor, or it can also be towed using the tow bar. The wheel chassis has swiveling telescopic outriggers that can be adjusted in several positions to support the machine.

### Safety Brake

**2** **A MECHANICAL**, centrifugal safety brake is a standard feature on all Scanclimber work platforms. It improves user safety.

### Automatic Leveling System

**3** **A TWIN VERSION** of Scanclimber mast climbers comes with an automatic leveling system. This highly reliable system controls the platform drive precisely and ensures that the platform is always horizontally leveled.

### Emergency Lowering System

**4** **ALL SCANCLIMBER PLATFORMS** can be manually lowered to the ground.

### Outlet for Hand Tools

**5** **HAND TOOLS** or other electrical devices can be plugged in the outlet sockets on the platform. It is a handy way to use electrical tools on the platform without impractical extension cables.

### Hot-dip Galvanization

**6** **ALL THE MAIN PARTS** of Scanclimber work platforms are hot-dip galvanized. So the surfaces are easy to keep clean while protected against demanding weather conditions and corrosion. Galvanization ensures a long life-time for the machine in any weather conditions.

Scanclimber is the world's technology leader in mast climbing equipment for installations. The company has its corporate head office in Pirkkala, Finland, and manufacturing in Gniezno, Poland. The company employs more than 200 people worldwide. Scanclimber creates value for its customers with high quality, reliable and flexible vertical access solutions.

# SCANCLIMBER®

Scanclimber Oy, Turkkirata 26, FI-33960 Pirkkala | [www.scanclimber.com](http://www.scanclimber.com)  
Tel. +358 10 680 7000, Fax +358 10 680 7033

Authorized partner