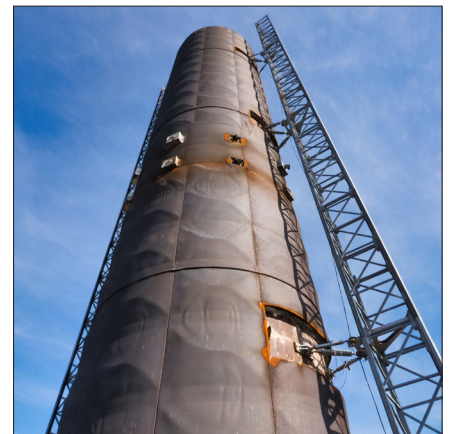
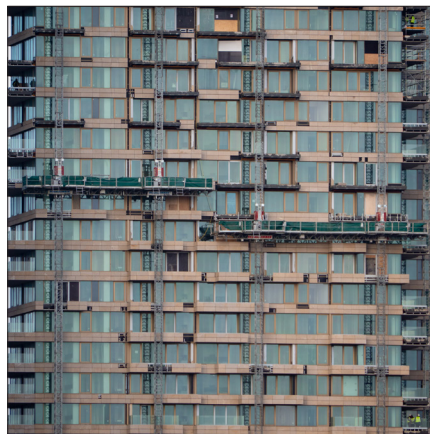
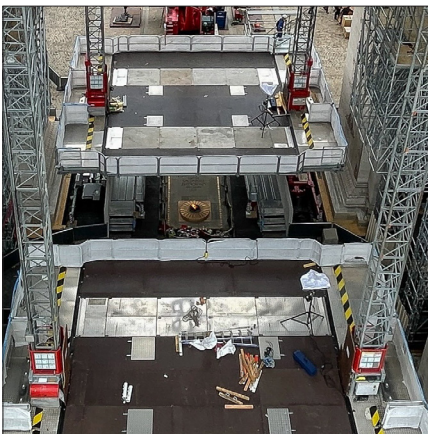
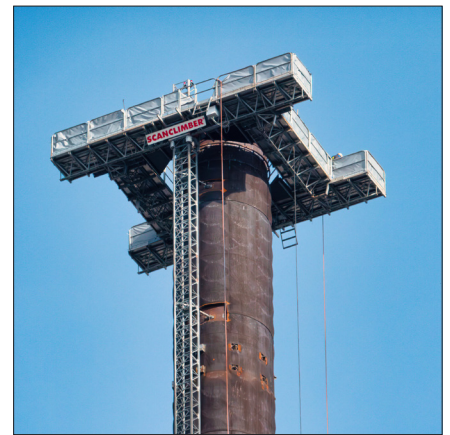
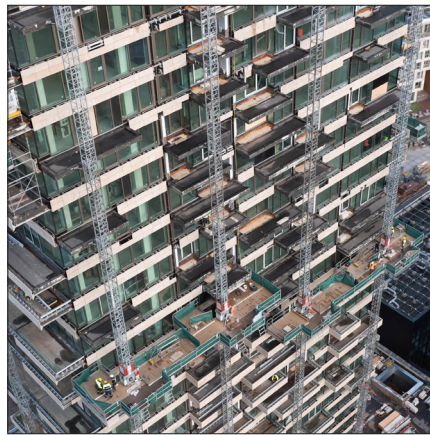
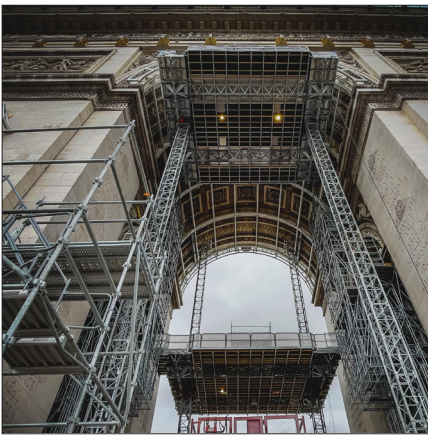
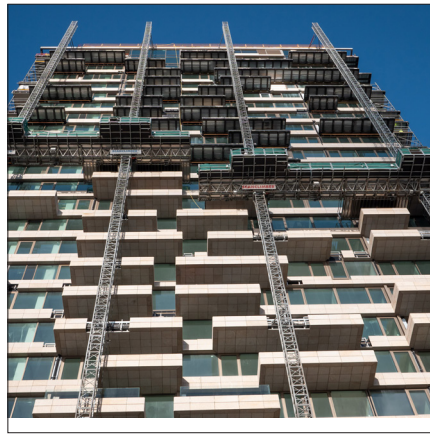




Mast climbing work platforms **Product family**

Mast climbing work platforms (MCWPs) are increasingly being used as temporary work places, giving variable height access to specific areas above ground level. In many cases MCWPs are more convenient to use than other forms of access equipment such as ladders, fixed scaffolding, staging or swingstage.



SCANCLIMBER

PART OF ALIMAK GROUP

Mast climbing work platforms

Properties

MAST CLIMBERS ARE IDEAL for facade work when lifting capacity, work ergonomics, and full surface accessibility are required on a new construction or renovation site. Scanclimber mast climbers offer lifting capacity from up to 10200 kg, ideal work ergonomics with full access to the surface with lifting speeds up to 12 meters per minute.

RACK AND PINION DRIVEN Scanclimber mast climbers are medium to heavy weight lifting machines and working platforms – all in one package. They can handle extreme heights, climbing fast and reliably up to hundred of meters. They are well-suited for facade work that requires a capacity from 1 tonne to 10 tonnes, whether for new construction or restoration.

Uses

SCANCLIMBER MAST CLIMBERS combine low ownership costs with versatility, reliability and safety. They are the ideal access solution for a wide variety of projects: glazing, EIFS, painting, roofing, caulking, restoration, inspection, cleaning, maintenance,

stucco and many others. Compact and highly adaptable Scanclimber mast climbers offer platform extensions to achieve a number of configurations that accommodate diverse facades and complex structures.

Single mast and twin mast versions

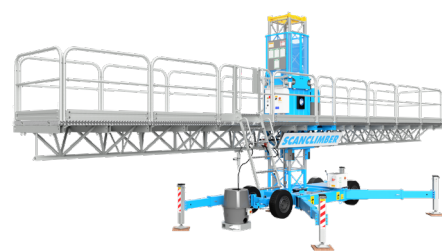
MAST CLIMBERS CAN BE CONFIGURED in two versions to meet your specific needs and your budget requirements.

THE SINGLE MAST versions support from 1 to 6 tonne payloads with platform lengths between 4.1 m and 20.1 meters.

THE TWIN MAST versions support payloads from 1 to 10.2 tonnes with platform lengths of up to 48.6 meters.

IF NEEDED, two single MCWPs (similar) can be converted to twin mast configuration with minor add-ons. And naturally, a twin machine can always be separated as two single mast versions.

Technical Data	SC2500		SC5000	
	Single mast	Twin mast	Single mast	Twin mast
Maximum platform length / loading capacity	2.6 m / 1340 kg	8.1 m / 2780 kg	4.1 m / 2700 kg	12.6 m / 5000 kg
	5.6 m / 920 kg	20.1 m / 1750 kg	7.3 m / 2300 kg	20.6 m / 4000 kg
	7.0 m / 640 kg	24.6 m / 950 kg	10.5 m / 1900 kg	28.6 m / 3000 kg
			13.7 m / 1500 kg	35.0 m / 2200 kg
		16.9 m / 1000 kg	40.6 m / 1500 kg	
Maximum freestanding height			18–20 m	18–20 m
			13–18 m	12.5–17.5 m
Maximum height with top anchor	-	-	25 m	25 m
Maximum height with mast anchored	150 m	150 m	100 m (higher mast by request)	100 m (higher mast by request)
Distance between anchors	7 m	7 m	18 m	18 m
Lifting speed	8.4 m / min	8.4 m / min	7 m / min	7 m / min
Mast section, hot-dip galvanised	1.5 m / 48 kg	1.5 m / 48 kg	1.25 m / 82 kg	1.25 m / 82 kg
Electric system - lifting motors	1x400V/50 Hz/ 3 kW, 3 phase/32 A	1x400 V/50 Hz/ 3 kW, 3 phase/32 A	2x400 V/50 Hz/ 3 kW, 3 phase/32 A	4x400 V/50 Hz/ 3 kW, 3 phase/32 A
Safety devices				
• overspeed safety brake	◆	◆	◆	◆
• emergency stop and limit switches	◆	◆	◆	◆
• electromagnetic brake	◆	◆	◆	◆
• phase sequency relay	◆	◆	◆	◆
• residual current device	◆	◆	◆	◆



Work space and speed

1.6 M WIDE PLATFORMS provide enough space for workers to perform their job safely in comfort and still requiring a very small footprint (space) on site. The machine is operated with speeds ranging from 6–12 m/min.

Fast to erect

SCANCLIMBER MAST CLIMBERS are faster to set up than most mast climbers. The reason is a very stable mast. It allows longer anchor/tie spacing – often almost double compared to respective rival products. All this contributes to greater labour efficiency and reduced set-up time, and of course to a safer work environment.

Long Lifetime – More Profit

SCANCLIMBER HAS BUILT IN LONG-LASTING QUALITY to mast climbing work platforms. It is in the structure, raw materials, automated manufacturing processes and finishing. For example the masts sections are precision welded from high quality steel by robots and when ready, they are finished with hot-dip galvanisation.

Mast

THE MAST SECTIONS are stable and designed to stand heavy wear and tear. They are fully hot-dip galvanised and measure 1.25

m and weigh 82 kg. The distance between the mast ties is up to 18 meters. SC2500 mast measures 1.5 m and weighs 48 kg.

Interchangeable components

THE MODULAR DESIGN OF SCANCLIMBER mast climbing work platforms makes most of the components interchangeable between different Scanclimber models. The platform is easy and quick to assemble manually and easy to transfer to a new location when necessary.

ALL SCANCLIMBER mast climbing work platforms are equipped with reliable safety systems:

- Safety brake, to prevent platform from falling in all circumstances
- Emergency lowering system
- Automatic movement limit switch at top and bottom
- Automatic levelling system, twin mast versions.

Cable Snagging Device

MCWP EQUIPPED WITH A SNAGGING DEVICE improves the operational safety. Cables are constantly in motion and must withstand high tensile stresses during operations. Snagging device automatically stops the MCWP in case of cable entanglement without causing any harm to the cable.

SC6000



SC8000



SC10000



Single mast

Twin mast

Single mast

Twin mast

Single mast

Twin mast

4.1 m / 3300 kg

13.4 m / 5600 kg

4.1 m / 4500 kg

14.2 m / 8000 kg

4.1 m / 6000 kg

15.8 m / 10200 kg

7.3 m / 2900 kg

23.8 m / 4600 kg

7.3 m / 4100 kg

23.8 m / 7500 kg

7.3 m / 5600 kg

19 m / 10400 kg

10.5 m / 2700 kg

27 m / 4100 kg

10.5 m / 3700 kg

27.0 m / 6500 kg

10.5 m / 5300 kg

24.6 m / 8800 kg

13.7 m / 2100 kg

36.6 m / 2200 kg

13.7 m / 3250 kg

36.6 m / 4100 kg

13.7 m / 4000 kg

30.2 m / 6600 kg

16.9 m / 1400 kg

44.6 m / 1200 kg

16.9 m / 2800 kg

46.2 m / 1000 kg

16.9 m / 3100 kg

35 m / 5600 kg

20.1 m / 1800 kg

40.6 m / 4300 kg

48.6 m / 1500 kg

12–19 m
9–15 m

12–18 m
9–15 m

9–19 m
9–15 m

9–18 m
9–15 m

9–19 m
9–15 m

9–18 m*
9–15 m*

25 m

25 m

25 m

25 m

25 m

25 m

100 m (higher mast by request)

100 m (higher mast by request)

150 m (higher mast by request)

150 m (higher mast by request)

150 m (higher mast by request)

150 m (higher mast by request)

18 m

18 m

18 m

18 m

18 m

18 m

11.3 m / min

11.3 m / min

7.2 m / min

7.2 m / min

8 m / min

8 / min

1.25 m / 82 kg

1.25 m / 82 kg

1.25 m / 82 kg

1.25 m / 82 kg

1.25 m / 82 kg

1.25 m / 82 kg

2x400 V/50 Hz/
5.5 kW, 3 phase/32 A

4x400 V/50 Hz/
5.5 kW, 3 phase/32 A

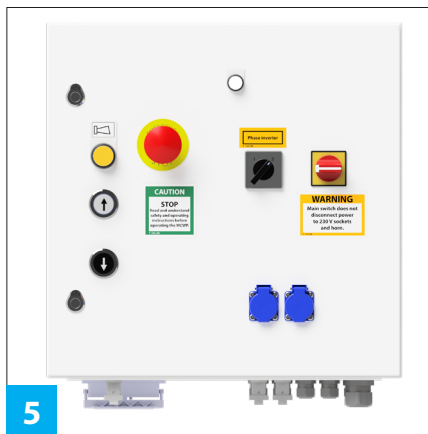
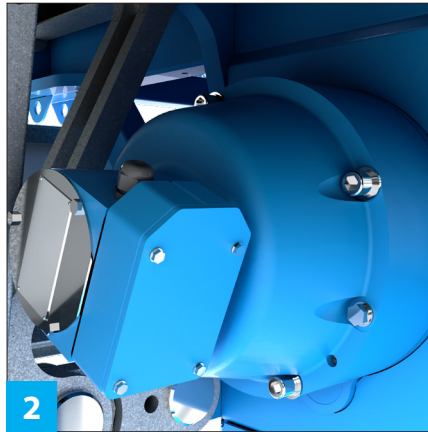
2x400 V/50 Hz/
4 kW, 3 phase/32 A

4x400 V/50 Hz/
4 kW, 3 phase/32 A

2x400 V / 50 Hz /
5.5 kW, 3 Phase/32 A

4x400 V / 50 Hz /
5.5 kW / 3 Phase/32 A





Details, examples

Chassis

1 **SCANCLIMBER PLATFORMS** are available with a wheel, mini or HD chassis. A wheel chassis can be moved around a work site with its own electric motor, or it can also be towed using the tow bar. The wheel chassis has swivelling telescopic outriggers that can be adjusted in several positions to support the machine.

Safety brake

2 A **MECHANICAL**, centrifugal safety brake is a standard feature on all Scanclimber work platforms.

Automatic levelling system

3 A **TWIN VERSION** of Scanclimber mast climbers comes with an automatic levelling system. This highly reliable system controls the platform drive precisely and ensures that the platform is always horizontally levelled.

Emergency lowering system

4 **ALL SCANCLIMBER PLATFORMS** can be manually lowered to the ground in case of power loss.

Outlet for hand tools

5 **HAND TOOLS** or other electrical devices can be plugged in the outlet sockets on the platform. It is a handy way to use electrical tools on the platform without impractical extension cables.

Hot-dip galvanisation

6 **ALL THE MAIN PARTS** of Scanclimber work platforms are hot-dip galvanised. So the surfaces are protected against demanding weather conditions and corrosion. Galvanisation ensures a long life-time for the machine in any weather conditions.

Scanclimber is a global leader in the design and manufacture of vertical access solutions for construction, renovation, and demolition projects globally. The company provides high quality mast climbing work platforms and custom vertical access solutions built on advanced rack and pinion technology. With a commitment to quality and innovation, Scanclimber continues to set new standards in the industry. Scanclimber is part of Alimak Group, which is headquartered in Stockholm, Sweden.

SCANCLIMBER

PART OF ALIMAK GROUP

Scanclimber Oy, Turkkirata 26, FI-33960 Pirkkala | www.scanclimber.com

Tel. +358 10 680 7000