

# SC

## Mast climbing work platform **Centum SC10000**

The SC10000 is the most powerful addition to Scanclimber's mast climbing work platforms.

Launched on the occasion of Finland's 100th Independence Day, the machine is named 'Centum'. The rack and pinion driven Centum is probably the strongest mast climber in the market of vertical access solutions. It is a perfect choice for heavy-duty facade works requiring a large platform size. Centum can be used in a single or a twin mast configuration, depending on the required payload capacities and platform lengths.



# SCANCLIMBER

PART OF ALIMAK GROUP

# Centum SC10000

## Stable and secure, offering a payload capacity of up to 10 tonnes

**THE RACK AND PINION DRIVEN** SC10000 mast climbing work platform, is a heavyweight lifting machine and working platform – all in one package. It is well-suited for any heavy-duty facade works requiring high load capacity – whether for new construction or restoration.

## Loading Capacity

**AS A SINGLE MAST** version, the SC10000 has a maximum loading capacity of 6000 kg. In its twin mast version, the capacity can exceed the 10000 kg. The single mast configuration gives a maximum platform length of 20.1 m and a payload capacity of slightly over 1800 kg. When using a twin mast, the platform length can safely reach up to 48.6 m, at which the loading limit is still 1500 kg. Following the standard mast tying procedure at constant intervals, a mast height of 150 m is possible and even higher by request.

## Safety Features

**SCANCLIMBER'S MCWPS** are incorporated with safety features such as railings surrounding the platform, fastening points for safety harnesses, a centrifugal safety brake and so on; all ensuring worker safety and maintaining good work ergonomics. All Scanclimber mast climbers are safety approved.

## Modular Design provides compatibility

**MANY OF THE SC10000 MODULES** and parts, like platform sections, railings, chassis and masts are modular and compatible with other Scanclimber mast climbers. This means savings and economies of scale if you already have some Scanclimber machines in use.

Our mast climbers' modular build means that also Centum is:

- Easily assembled and erected
- Quickly transported to the desired location
- Easily dismantled after use
- Space efficient for storage

## Improved productivity and ergonomics for heavy duty tasks

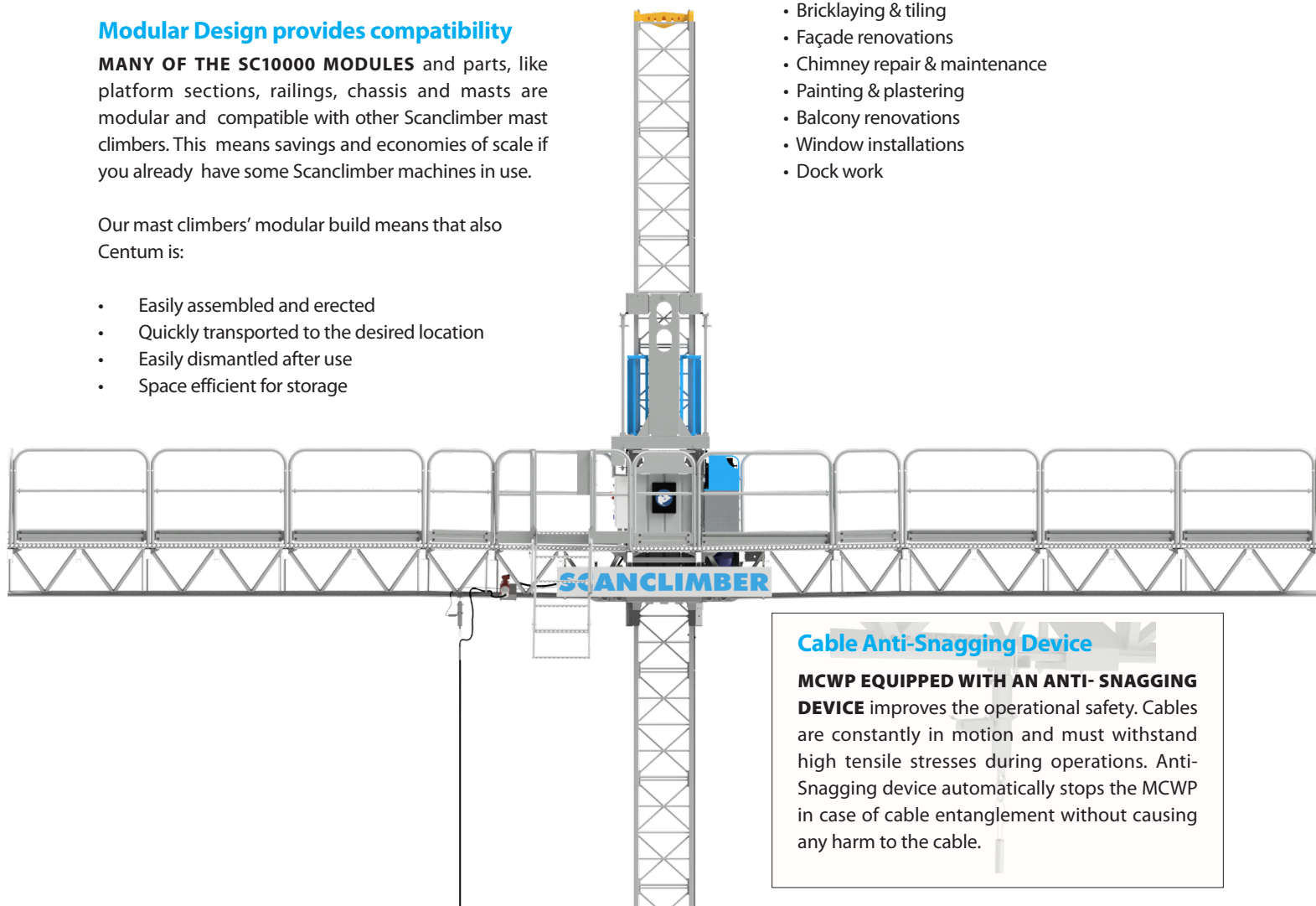
### Drive Unit

**THE SC10000 IS A ROBUST** lifting machine with a rack and pinion driven work platform. It has the strongest drive unit in the product family, consisting of two 5.5 KW motors. This machine is an ideal choice for heavy duty facade works and for projects requiring an extra-large platform size at demanding heights. Materials and personnel can be lifted to the desired working height swiftly, safely and easily. For such high payloads and platform lengths, having a lifting speed of 7 m/min makes Centum a very productive and time efficient solution. Using an MCWP also increases productivity by a third, in the sense that two people working on the platform can yield the same result as four people working on traditional scaffolding.

### Applications

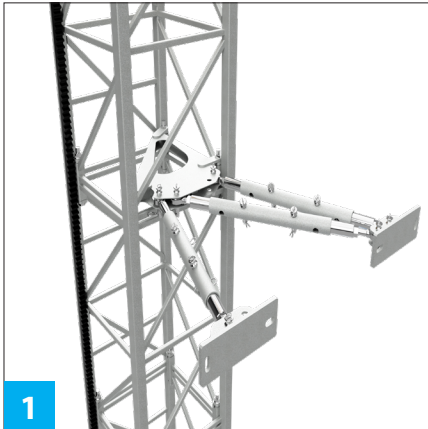
**HEAVY DUTY FAÇADE WORKS** at greater heights have become the norm in the construction industry. Centum is a perfect fit for such operations, while maintaining work ergonomics. The platform can also be equipped with weather covers to combat rain, snow and other challenging conditions. The most effective applications for a heavy machine like Centum are in:

- Bricklaying & tiling
- Façade renovations
- Chimney repair & maintenance
- Painting & plastering
- Balcony renovations
- Window installations
- Dock work

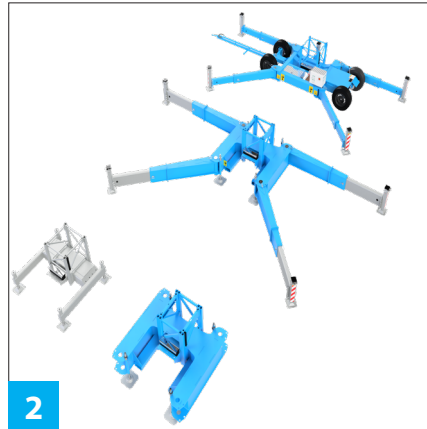


### Cable Anti-Snagging Device

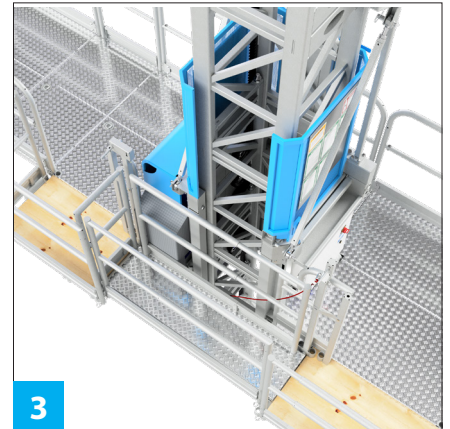
**MCWP EQUIPPED WITH AN ANTI-SNAGGING DEVICE** improves the operational safety. Cables are constantly in motion and must withstand high tensile stresses during operations. Anti-Snagging device automatically stops the MCWP in case of cable entanglement without causing any harm to the cable.



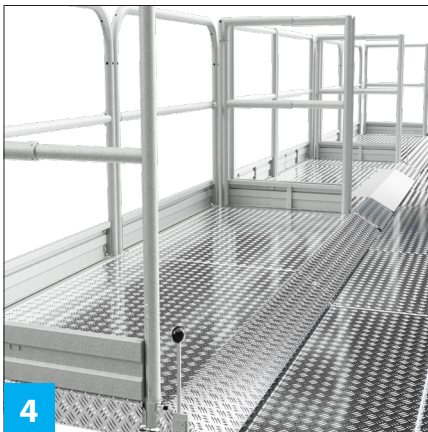
1



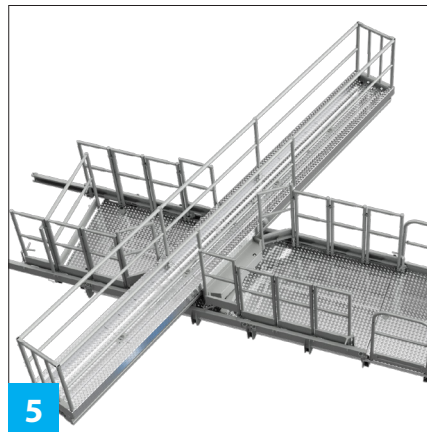
2



3



4



5



6

## Details

### Mast ties

**1** **SCANCLIMBER'S CENTUM** is mounted with maxi ties, which are much stronger and stable in comparison to traditional mast ties. An extra strong mast tie allows a tying distance of up to 18 meters. This speeds up the whole mast erection process.

### Chassis

**2** **THE SC10000 IS AVAILABLE** with a wheel chassis or a mini chassis. The wheel chassis can be moved around the worksite under its own electric motor power or using towing bars. It also has swiveling telescopic outriggers that can be adjusted to several positions to support the mast climbing work platform. The outriggers allow the machine standing on the wheel chassis to be erected without mast ties.

### Bridge extension

**3** **BRIDGE EXTENSION EHANCNES** Mast Climbing Work Platforms (MCWPs) by providing safe access over the gap between the mast and the wall. Available in single and double deck versions

(upgradable), it supports up to 240 kg. The double deck allows seamless movement across the platform, improving efficiency. Ideal for safe and streamlined work in complex construction environments.

### Sliding deck extension (SDE)

**4** **THE SLIDING DECK EXTENSION** is an add-on that transforms a standard MCWP into a dynamically aligning platform, outreaching its range. SDE is capable to slide horizontally in and out from the main platform. This extension comes in handy when an MCWP is used on buildings that have a complex façade.

### All reach extension (ARE)

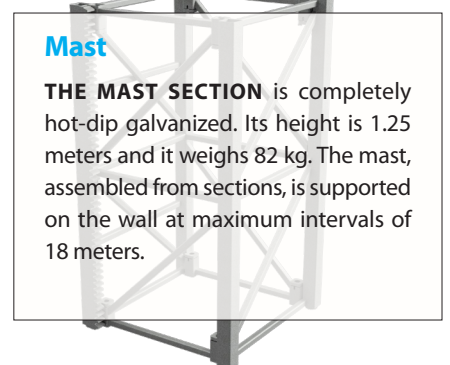
**5** **AN ARE IS A FREELY** moving diagonal platform on the main platform that can slide in and out by 5 meters. It can also move along the platform and turn  $\pm 45$  degrees. This platform extension comes into play when the facade work includes uneven surfaces and complex structures inaccessible with a standard MCWP.

### Hinged platform extension (Snake)

**6** **THE SNAKE** is a hinged platform system that can be used with the SC10000. The platform moves like a snake in the horizontal plane forming into just about any shape. Each of the Snake's platform sections (up to 8 units) can be steplessly adjusted to  $\pm 45$  degrees. The platform can also be easily adjusted from the platform level during work. The Snake is suitable for working on curved, conical and other varying wall surfaces.

### Mast

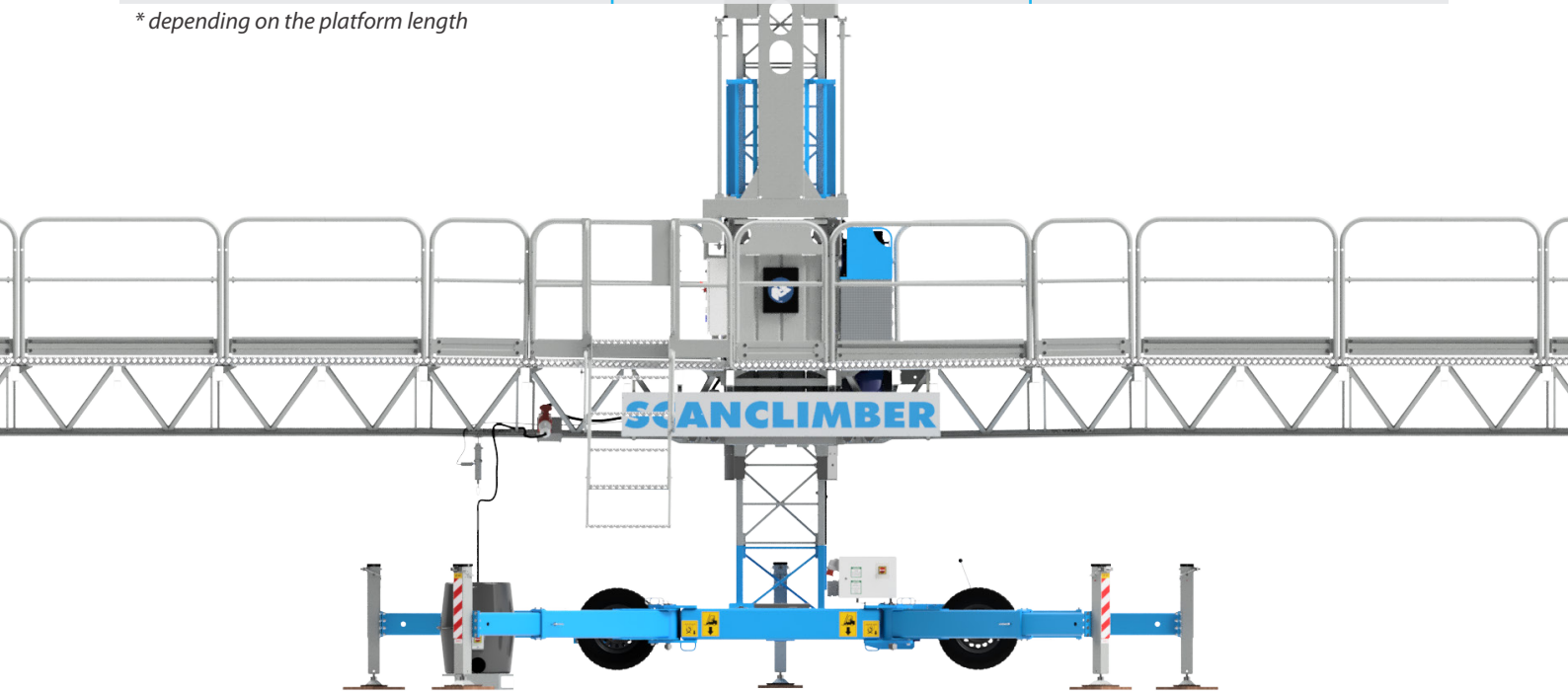
**THE MAST SECTION** is completely hot-dip galvanized. Its height is 1.25 meters and it weighs 82 kg. The mast, assembled from sections, is supported on the wall at maximum intervals of 18 meters.



# Technical Data

	Single mast SC10000	Twin mast SC10000
Max. platform length / loading capacity	4.1 m / 6000 kg 7.3 m / 5600 kg 10.5 m / 5300 kg 13.7 m / 4000 kg 16.9 m / 3100 kg 20.1 m / 1800 kg	15.8 m / 10200 kg 19 m / 10400 kg 24.6 m / 8800 kg 30.2 m / 6600 kg 35 m / 5600 kg 40.6 m / 4300 kg 48.6 m / 1500 kg
Max. freestanding height - with extended outriggers on both sides - with extended outriggers on one side	9–19 m* 9–15 m*	9–18 m* 9–15 m*
Max. height with top tie	25 m	25 m
Max. height with mast tied	150 m	150 m
Distance between mast ties	18 m	18 m
Lifting speed	8 m / min	8 m / min
Mast section, hot-dip galvanised	1.25 m / 82 kg	1.25 m / 82 kg
Electric system - lifting motors - drive motor	2x400 V/50 Hz/5.5 kW, 3 Phase/32 A 400 V/1.1 kW	4x400 V/50 Hz/5.5 kW, 3 Phase/32 A 2x400 V/1.1 kW
Safety devices - overspeed safety brake - emergency stop and limit switches - electromagnetic brake - phase sequency relay - residual current device	◆ ◆ ◆ ◆ ◆	◆ ◆ ◆ ◆ ◆

\* depending on the platform length



Scanclimber is a global leader in the design and manufacture of vertical access solutions for construction, renovation, and demolition projects globally. The company provides high quality mast climbing work platforms and custom vertical access solutions built on advanced rack and pinion technology. With a commitment to quality and innovation, Scanclimber continues to set new standards in the industry. Scanclimber is part of Alimak Group, which is headquartered in Stockholm, Sweden.

# SCANCLIMBER

PART OF ALIMAK GROUP

Scanclimber Oy, Turkkirata 26, FI-33960 Pirkkala | [www.scanclimber.com](http://www.scanclimber.com)

Tel. +358 10 680 7000