

# SC

## Mast climbing work platform **SC2500**

Scanclimber SC2500 is a highly efficient, cost effective, and versatile light range Mast Climbing Work Platform (MCWP) that combines modern digital support with robust mechanical engineering to offer an unmatched level of efficiency and usability.

SC2500 is the right tool when it comes to work in urban areas and confined spaces. It can be used as a single or a twin mast configurations. SC2500 moves workers, tools and building materials to the desired height at a single lift. Rack and pinion driven mast climbing work platform saves time and money at work sites.



# SCANCLIMBER

PART OF ALIMAK GROUP

# SC2500

## Enhanced productivity and better ergonomics

**RACK AND PINION DRIVEN** SC2500 is a light range Mast Climbing Work Platform (MCWP) that offers precise control and stability for vertical access in construction and maintenance. The rack and pinion MCWP system with square mast enables smooth, efficient movement, ideal for various tasks at different heights. Lightweight and easy to transport, these MCWPs facilitate quick setup and minimal site disruption, making them particularly suitable for projects in urban and space-sensitive environments.

**WORK PRODUCTIVITY & EFFICIENCY** can be easily improved by one-third with a mast climbing work platform. The mast climbing work platform reduces and speeds up considerably the time-consuming up and down travel during working days. supports eco-friendly practices by lowering emissions and noise pollution.

**THE LIGHT MAST CLIMBING WORK PLATFORM** is particularly beneficial in urban construction and renovation projects where space is limited and disruption needs to be minimized. They are ideal for interior applications in large buildings such as atriums, and their compact design allows use in narrow or confined spaces like alleys or enclosed courtyards. Light MCWP are advantageous for short-term projects requiring quick setup and dismantling, such as minor repairs or advertising installations. Additionally, their lighter weight and less invasive setup make them perfect for use in sensitive environments like historical sites or landscaped areas, where heavier equipment could cause damage. SC2500 MCWP is an economical and time-saving solution, for example, in the following work:

- Urban construction renovation
- Painting and plastering
- Balcony renovations
- Facade repair and maintenance

### Cable Holder

**CABLE HOLDER ON SC2500** improves the operational safety. Cables are constantly in motion along the mast during operations. Cable Holder prevents tangling and damage during the platform's operation. It enhances safety by reducing tripping hazards and maintains the integrity of the connections essential for the MCWP's functionality.

## Robust and stable platform with a lightweight capacity of up to 2780 kg

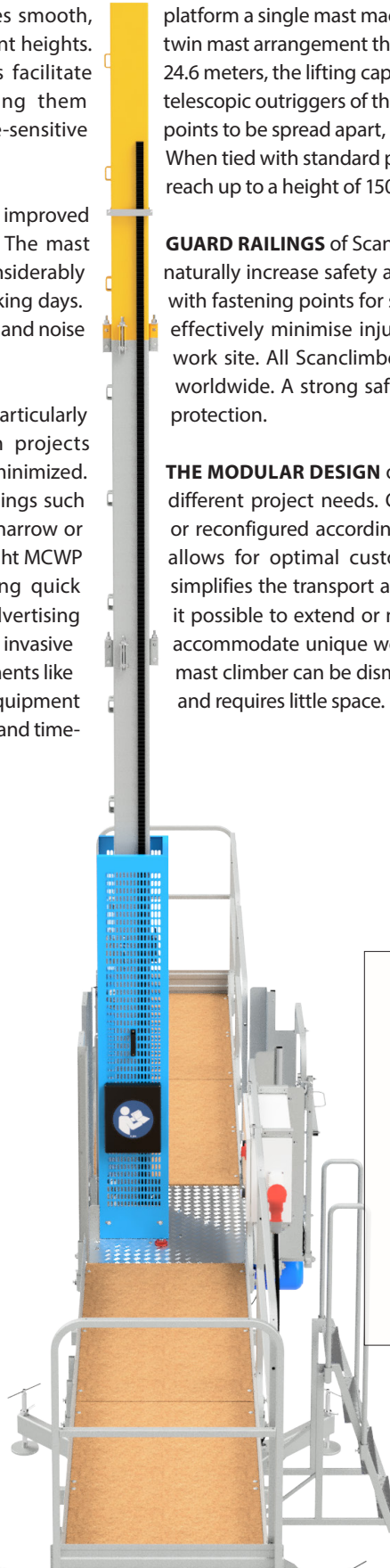
**THE LOADING CAPACITY** is up to 1340 kg for a single mast SC2500 and 2780 kg for a twin mast configuration. With a full 7.0-meter platform a single mast machine is able to lift 640 kg. Using a twin mast arrangement the platform can be extended up to 24.6 meters, the lifting capacity thus being 950 kg. Swivelling telescopic outriggers of the chassis allow the chassis' support points to be spread apart, enabling more stability for SC2500. When tied with standard parts at constant intervals the mast can reach up to a height of 150 meters.

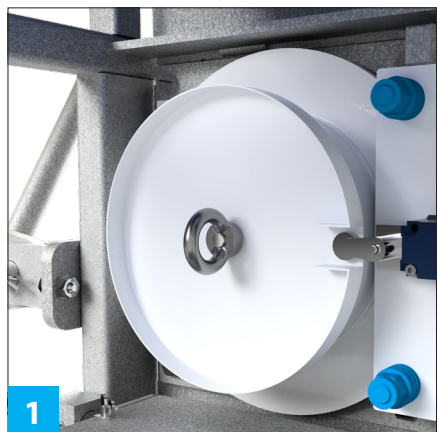
**GUARD RAILINGS** of Scanclimber mast climbing work platforms naturally increase safety at work. The platform is also equipped with fastening points for safety harnesses. These safety features effectively minimise injuries incurred by slipping or falling at work site. All Scanclimber mast climbers are safety-approved worldwide. A strong safety brake provides additional level of protection.

**THE MODULAR DESIGN** offers flexibility and adaptability across different project needs. Components can be easily assembled or reconfigured according to specific site requirements, which allows for optimal customization. This modularity not only simplifies the transport and installation process but also makes it possible to extend or modify the platform size and shape to accommodate unique work environments and tasks. Since the mast climber can be dismantled into modules, it is easy to store and requires little space.

### Cable Anti-Snagging Device

**MCWP EQUIPPED WITH AN ANTI-SNAGGING DEVICE** improves the operational safety. Cables are constantly in motion and must withstand high tensile stresses during operations. Anti-Snagging device automatically stops the MCWP in case of cable entanglement without causing any harm to the cable.

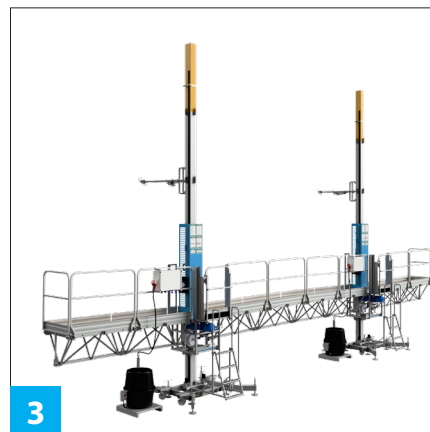




1



2



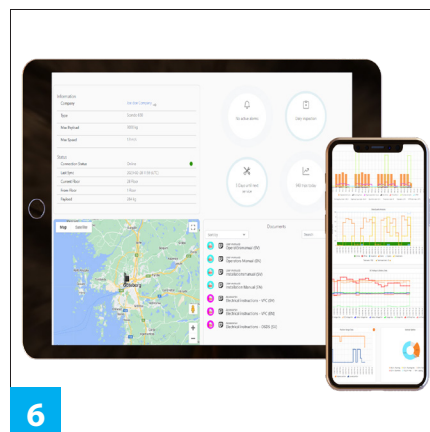
3



4



5



6

# Details

## Safety brake

**1 A MECHANICAL**, safety brake is a standard feature on all Scanclimber mast climbing work platforms to improve user safety. Robust and tested safety brake ensures peace of mind for operators, making high-altitude work safer and reliable.

## Mast tie

**2 A LIGHTWEIGHT PLATFORM** demands reliable mast ties. SC2500's mast ties are designed for effortless installation, significantly reducing labour and time on-site. These ties are engineered to be both lightweight and strong, facilitating quicker setup without compromising stability. The efficient design allows for an extended tying distance, enhancing the overall setup speed and contributing to cost savings.

## Twin masts

**3 TWIN MAST CONFIGURATION** enhances the SC2500's capabilities, expanding the platform length from 7.0 meters to 24.6 meters. This allows for a substantial increase in loading capacity, nearly doubling it from 1340 kg to 2780 kg when needed.

## Base frame

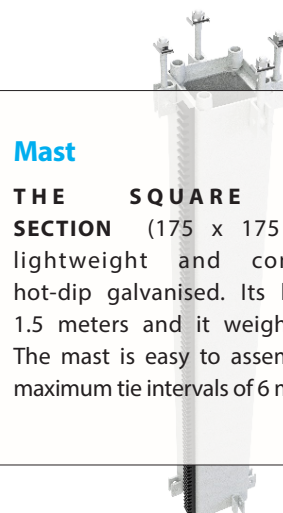
**4 SC2500** is equipped with a hot-dip galvanized base frame featuring detachable wheels (**optional**) for enhanced mobility inside warehouses and outriggers for stable installation on site. The outriggers allow the MCWP standing with better flexibility and stability. The innovative design allows for easy relocation in and stable, and secure setup, facilitating quick adjustments and efficient operation on various worksites.

## Extensions

**5 SC2500 WITH ADJUSTABLE** extensions expands the platform's width by up to 0.8 meters. These extensions allow workers to effectively reach around complex structures and maneuver behind or around various corners, making the platform highly adaptable to meet the specific demands of different projects. This versatility ensures that the SC2500 can handle a broad range of tasks, particularly in environments with intricate architectural features, by providing comprehensive access and improved operational flexibility.

## Digital integration and support

**6 SC2500 EQUIPPED** with digital integration and support tools like **MYALIMAK** and **BIM gallery**. MyAlimak is a customised web-based portal developed by Alimak Group to enhance the safe and efficient use of construction products.



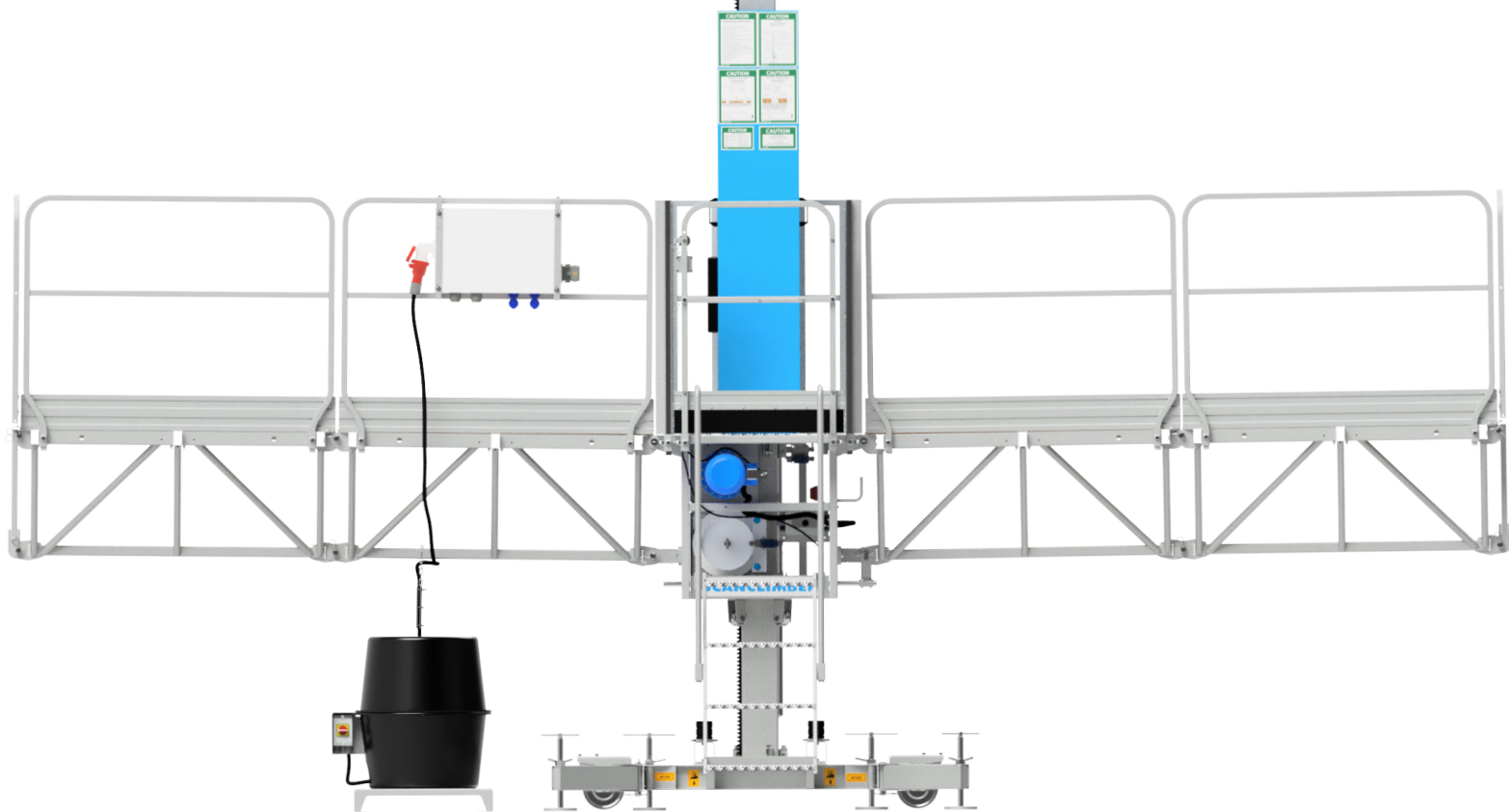
## Mast

**THE SQUARE MAST SECTION** (175 x 175 mm) is lightweight and completely hot-dip galvanized. Its height is 1.5 meters and it weighs 48 kg. The mast is easy to assemble with maximum tie intervals of 6 meters.

# Technical Data

	Single mast SC2500	Twin mast SC2500
Max. platform length / loading capacity*	2.6 m / 1340 kg 5.6 m / 920 kg 7.0 m / 640 kg	8.1 m / 2780 kg 20.1 m / 1750 kg 24.6 / 950 kg
Max. mast overhang	3 m	3 m
Max. height with mast anchored	150 m	150 m
Distance between mast ties	Up to 7 m	Up to 7 m
Lifting speed	8.4 m/min	8.4 m/min
Mast section, hot-dip galvanised	1.5 m / 48 kg	1.5 m / 48 kg
Electric system - lifting motors	1x400 V/50 Hz/3 kW, 3 phase/16 A	2x400 V/50 Hz/3 kW, 3 phase/16 A
Safety devices - overspeed safety brake - emergency stop and limit switches - electromagnetic brake - phase sequency relay - residual current device	◆ ◆ ◆ ◆ ◆	◆ ◆ ◆ ◆ ◆

\* Payload include people (2 at single/4 at twin) freely positioned



Scanclimber is a global leader in the design and manufacture of vertical access solutions for construction, renovation, and demolition projects globally. The company provides high quality mast climbing work platforms and custom vertical access solutions built on advanced rack and pinion technology. With a commitment to quality and innovation, Scanclimber continues to set new standards in the industry. Scanclimber is part of Alimak Group, which is headquartered in Stockholm, Sweden.

# SCANCLIMBER

PART OF ALIMAK GROUP

Scanclimber Oy, Turkkirata 26, FI-33960 Pirkkala | [www.scanclimber.com](http://www.scanclimber.com)

Tel. +358 10 680 7000