

SC

Mast climbing work platform **Maxus SC5000**

The Maxus SC5000 is a robust workhorse of Scanclimber's mast climbing work platforms. With a load capacity of up to 5 000 kg and a climbing rate of 7 or 12 meters per minute, it is the perfect tool for any facade work which requires great capacity – whether for new construction or restoration. The SC5000 takes workers, tools and building materials to the desired height at a single lift. A rack and pinion driven mast climbing work platform saves time and money at work sites.



SCANCLIMBER

PART OF ALIMAK GROUP

Maxus SC5000

Versatile Work Platform

THE RACK AND PINION DRIVEN SC5000 mast climbing work platform is a mid-heavyweight lifting machine and a working platform – all in one package. It can handle extreme heights, climbing fast and reliably up to 300 meters. It is well-suited for any facade work that requires a capacity from 1 to 5-tonnes, whether for new construction or restoration.

THE SC5000'S 1.6 M-WIDE PLATFORM provides enough space for workers to perform their job in comfort. Starting from 4.1 meters, a single mast can grow up to 16.9 meters in length. With two masts the platform length can be extended up to 40.6 meters. It is possible to use this twin mast configuration as two separate machines if needed.

Multi-Use

THE MAXUS COMBINES low ownership costs with versatility, reliability and safety. It is the ideal access solution for a wide variety of trades: glazing, EIFS, painting, roofing, caulking, restoration, inspection, cleaning, maintenance, stucco and many others. We have often seen it used in masonry work too. Compact and highly adaptable, the SC5000 offers platform extensions to achieve a number of configurations that can accommodate various facades.

Technological Excellence

BUILDING FACADES are becoming more and more diverse and constrained, which has been challenging mast climber manufacturers. The Maxus' modular structure allows lots of different set-ups. There is also a wide variety of accessories available that enables the platform to be aligned with different architectural configurations and work site layouts.

High Speed Reduces Set-Up Time

WITH A CLIMBING RATE of 7 or 12 meters per minute, Scanclimber Maxus is not only fast to climb up, but it is also faster to set-up than most mast climbers. The reason is a very stable mast. It allows a maximum tying space of 18 meters - which is almost double compared to respective rival products. All this contributes to greater labour efficiency, reduced set-up time and of course to a safer work environment.

Long Lifetime – More Profit

SCANCLIMBER HAS LONG-LASTING QUALITY built into its mast climbing work platforms. It is in structures, raw materials, automated manufacturing processes and finishing. For example the mast sections are precision welded from high grade steel by robots and when ready they are finished with hot-dip galvanisation.

MODULAR DESIGN of Scanclimber mast climbing work platforms makes the components interchangeable between different Scanclimber models. The platform is easy and quick to erect and assemble manually and transfer to a new location when necessary. One mast section weighs 82 kg and the platform module around 130 kg. The platform floor is made of ribbed aluminium sheet. Since the mast climber can be dismantled into modules, it is easy to store and requires little space.

Flexibility with Options

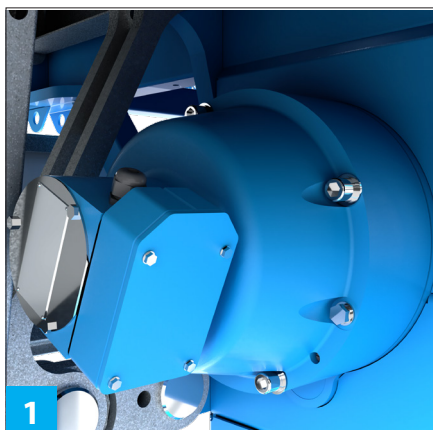
YOU CAN HAVE MAXUS with various useful options such as: squirming Snake platform, Bricklayers extensions, Lifting table LT500, swinging Lifting arm, Mast assembly crane arm and many others.

SQUIRMING SNAKE is a platform system which provides an access to almost any facade shape. Bricklayer's extension is a lowered platform in front of the main platform. Lifting table is used when loading heavy materials on the platform on the ground. Swinging lifting arm on the top of the mast helps to move heavy goods and materials on the platform. Mast assembly crane makes mast installation easier.

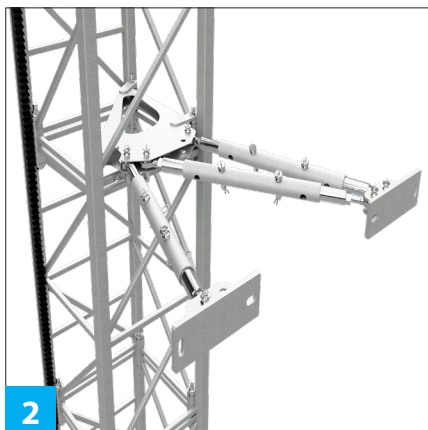


Cable Anti-Snagging Device

MCWP EQUIPPED WITH AN ANTI-SNAGGING DEVICE improves the operational safety. Cables are constantly in motion and must withstand high tensile stresses during operations. Anti-Snagging device automatically stops the MCWP in case of cable entanglement without causing any harm to the cable.



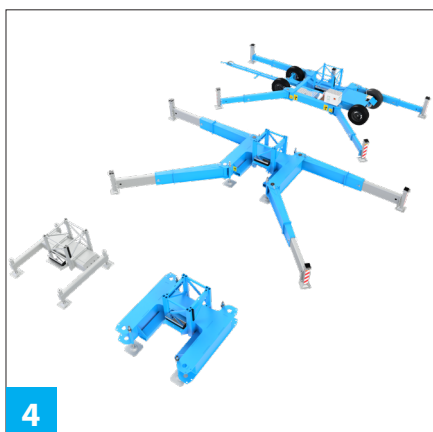
1



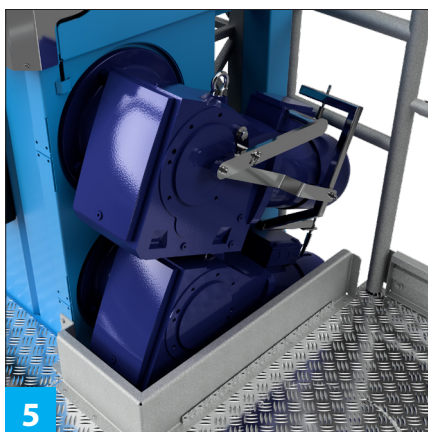
2



3



4



5



6

Details

Safety brake

1 A MECHANICAL, centrifugal safety brake is a standard feature on all Scanclimber mast climbing work platforms. It improves user safety, increases operational reliability and reduces the risk of breakdown. The safety brake is protected from dust and dirt.

Mast Ties

2 THE MAST IS ANCHORED to a wall with strong and durable mast ties. The standard mast tie type for the SC5000 is tube-type fixed with couplers which allows a maximum tying spacing of 12.5 meters. It is easy to install with regular tools and fits in various configurations. If longer tie spaces are needed, the Scanclimber's Maxi-Tie can be used. Maxi-Tie is even stronger than the standard tie and it allows a tying spacing of up to 18 meters.

Automatic Levelling System

3 A TWIN VERSION MAXUS comes with an automatic levelling system. The highly reliable system controls the platform drive precisely and ensures that the platform is always horizontally levelled.

Chassis

4 SC5000 is available with a wheel chassis or mini-chassis. An SC5000 on a wheel chassis can be moved around a work site with its own electric motor, or it can also be towed using a towing bar. The wheel chassis has swivelling telescopic outriggers that can be adjusted in several positions to support the mast climbing work platform.

Emergency Lowering System

5 THE MAXUS PLATFORM can be manually operated, without power, and lowered to the ground. This feature is incorporated to provide a means of returning the platform in the event of a power failure.

Extensions

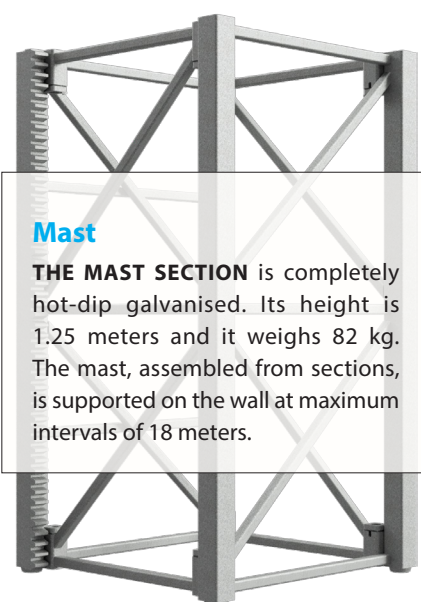
6 TELESCOPIC EXTENSIONS are versatile additions to Mast Climbing Work Platforms, designed to enhance reach and flexibility on diverse projects. Available in lengths of 1.8m, 2.5m, and an adjustable range of 2.6-6m, these extensions cater to a wide variety of construction needs. They enable the platform to access

complex structures and hard-to-reach areas, streamlining project execution and improving efficiency.

For added safety, all telescopic extensions are equipped with Guard Railings, ensuring secure operation as workers extend beyond the main platform area.

Mast

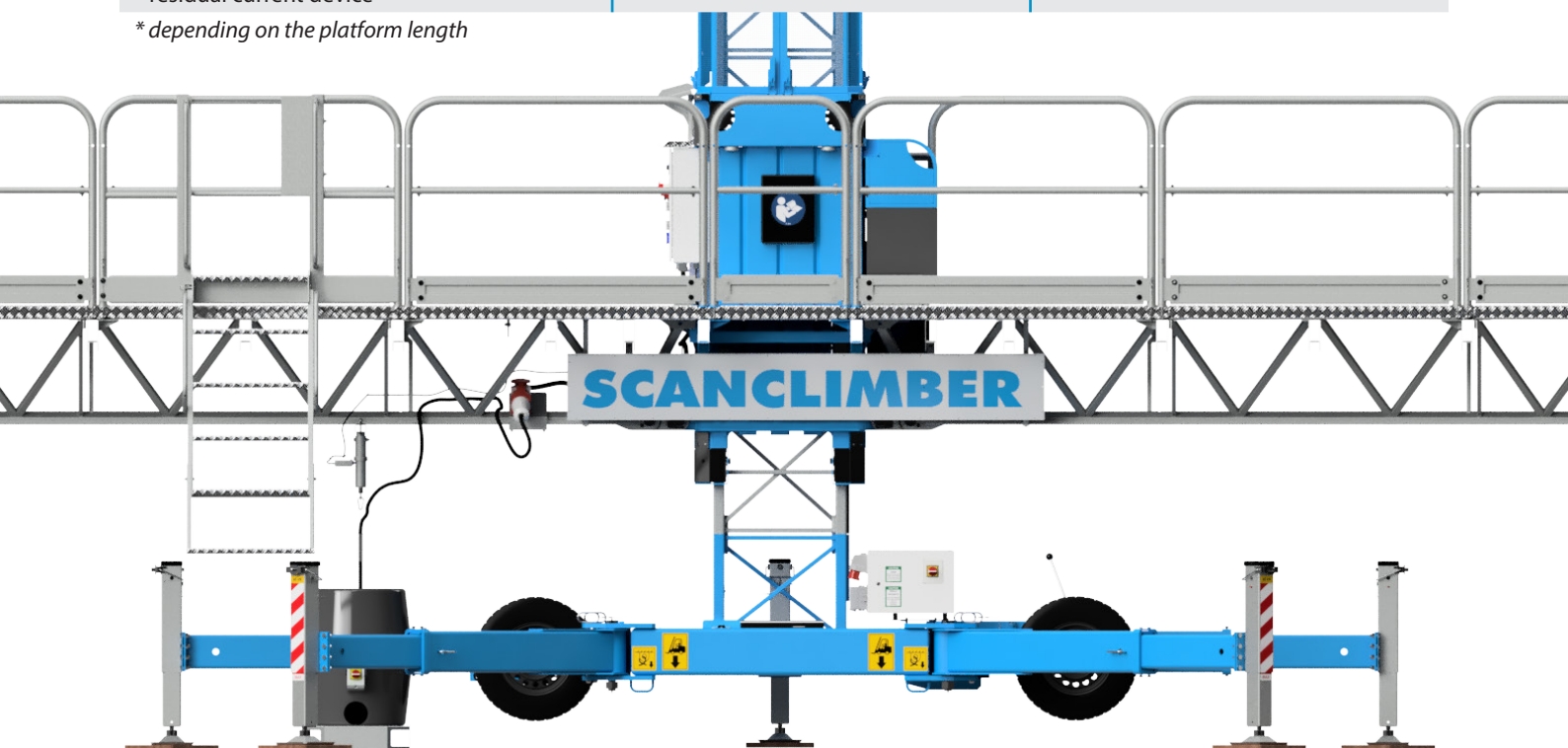
THE MAST SECTION is completely hot-dip galvanised. Its height is 1.25 meters and it weighs 82 kg. The mast, assembled from sections, is supported on the wall at maximum intervals of 18 meters.



Technical Data

	Single mast SC5000	Twin mast SC5000
Maximum platform length / loading capacity	4.1 m / 2700 kg 7.3 m / 2300 kg 10.5 m / 1900 kg 13.7 m / 1500 kg 16.9 m / 1000 kg	12.6 m / 5000 kg 20.6 m / 4000 kg 28.6 m / 3000 kg 35.0 m / 2200 kg 40.6 m / 1500 kg
Maximum freestanding height		
- with extended outriggers on both sides	18–20 m*	20 m
- with extended outriggers on one side	13–18 m*	13–20 m*
Maximum height with top tie	25 m	25 m
Maximum height with mast tied	100 m (higher mast by request)	100 m (higher mast by request)
Distance between mast ties	18 m	18 m
Lifting speed	7 / 12 m / min	7 / 12 m / min
Mast section, hot-dip galvanised	1.25 m / 82 kg	1.25 m / 82 kg
Electric system		
- lifting motors	2x400 V/50 Hz/3/5.5 kW, 3 phase/32 A	4x400 V/50 Hz/3/5.5 kW, 3 phase/32 A
- drive motor	400 V/1.1 kW	2x400 V/1.1 kW
Safety devices		
- overspeed safety brake	◆	◆
- emergency stop and limit switches	◆	◆
- electromagnetic brake	◆	◆
- phase sequency relay	◆	◆
- residual current device	◆	◆

* depending on the platform length



Scanclimber is a global leader in the design and manufacture of vertical access solutions for construction, renovation, and demolition projects globally. The company provides high quality mast climbing work platforms and custom vertical access solutions built on advanced rack and pinion technology. With a commitment to quality and innovation, Scanclimber continues to set new standards in the industry. Scanclimber is part of Alimak Group, which is headquartered in Stockholm, Sweden.

SCANCLIMBER

PART OF ALIMAK GROUP

Scanclimber Oy, Turkkirata 26, FI-33960 Pirkkala | www.scanclimber.com

Tel. +358 10 680 7000